

RECEIVED
LARAMIE COUNTY
CLERK'S OFFICE

CERTIFIED LAND CORNER RECORDATION

'87 AUG 28 AM 9 06

DESCRIPTION OF CORNER EVIDENCE FOUND, AND ORIGINAL RECORD (if known)

T. 14 N.
R. 22 | 23
27 | 26
R. 67 W.

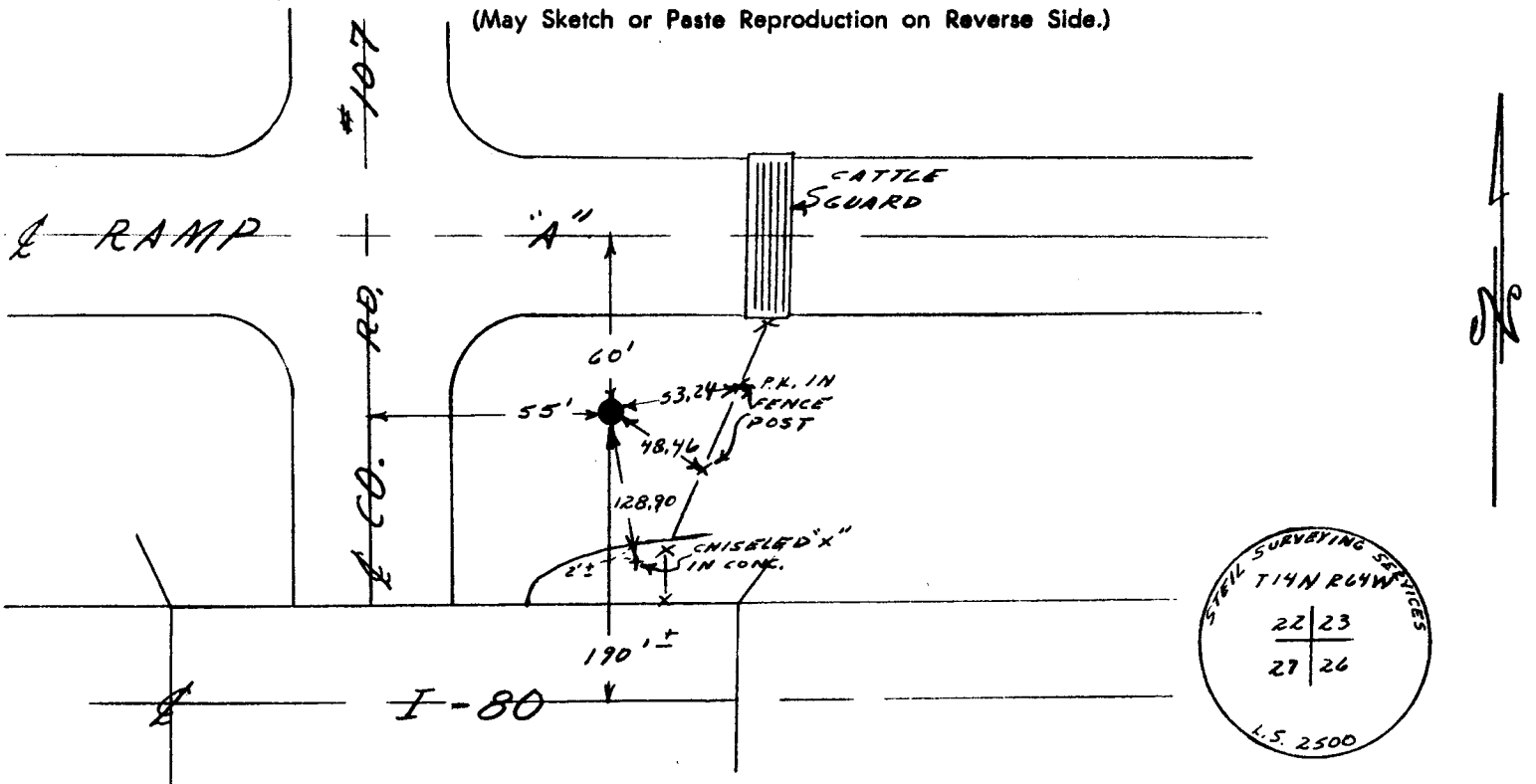
FOUND: NO EVIDENCE OF PREVIOUS MONUMENTATION
SET: 2 1/2" DIA. X 30" LONG ALUMINUM PIPE WITH 3" CAP FLUSH WITH
GROUND. SET FROM DEED SECTION TIES AND STAMPED AS
SHOWN BELOW.

DESCRIPTION OF MONUMENT AND ACCESSORIES ESTABLISHED
TO PERPETUATE THE ORIGINAL LOCATION OF THIS CORNER:

SEE TIES BELOW

SKETCH, WITH COURSE AND DISTANCE TO ADJACENT CORNER IF DETERMINED IN THIS SURVEY.

(May Sketch or Paste Reproduction on Reverse Side.)



I, JOHN A. STEIL certify that I have carefully performed or reviewed the work done on the diagrammed corner as reported on this recordation form and approve the same.

John A. Steil
Signature of Surveyor

L.S. 2500
Registration No.

STATE OF WYOMING,
Office of Clerk and Recorder,
County of Laramie

This "corner record" was filed for record on the 28 day of August, 1987, was noted on the cross-index plat and is assigned page No. _____, in book No. _____.

John C. [Signature]
County Official

Cross Index No. <u>R-17</u>	T. <u>14N</u>	R. <u>67W</u>	Mer.
_____	T. _____	R. _____	Mer.
_____	T. _____	R. _____	Mer.
_____	T. _____	R. _____	Mer.
_____	T. _____	R. _____	Mer.
_____	T. _____	R. _____	Mer.
_____	T. _____	R. _____	Mer.